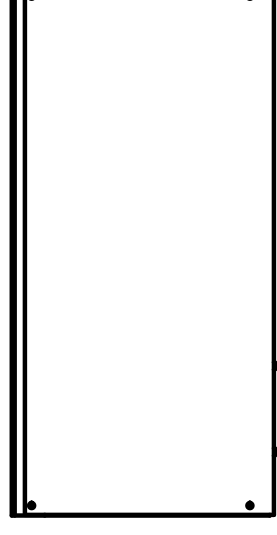
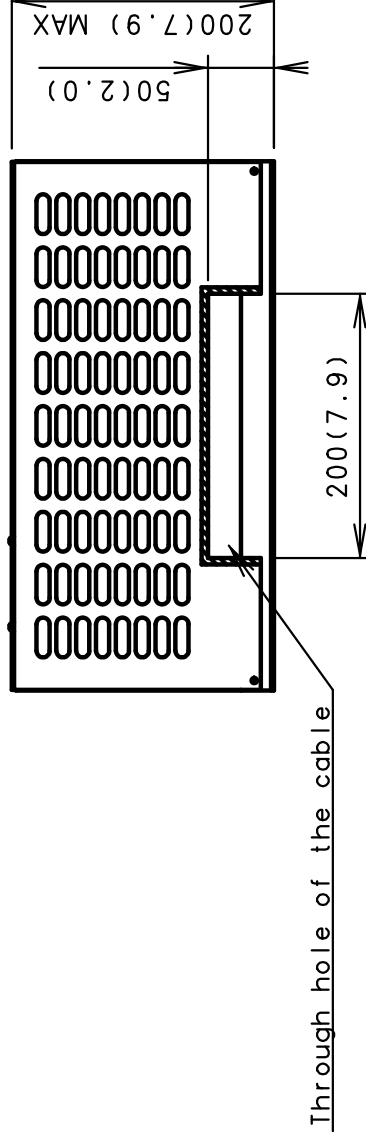
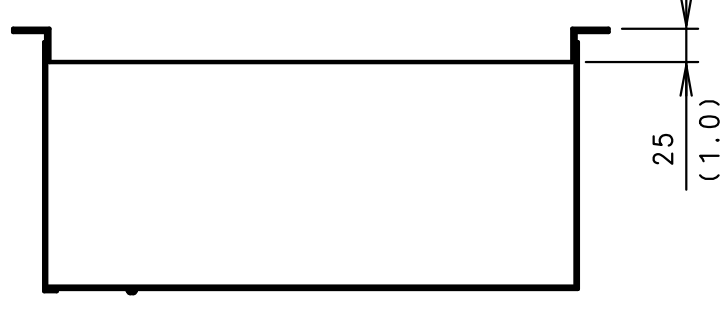
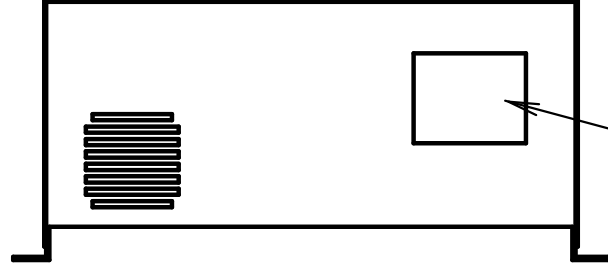
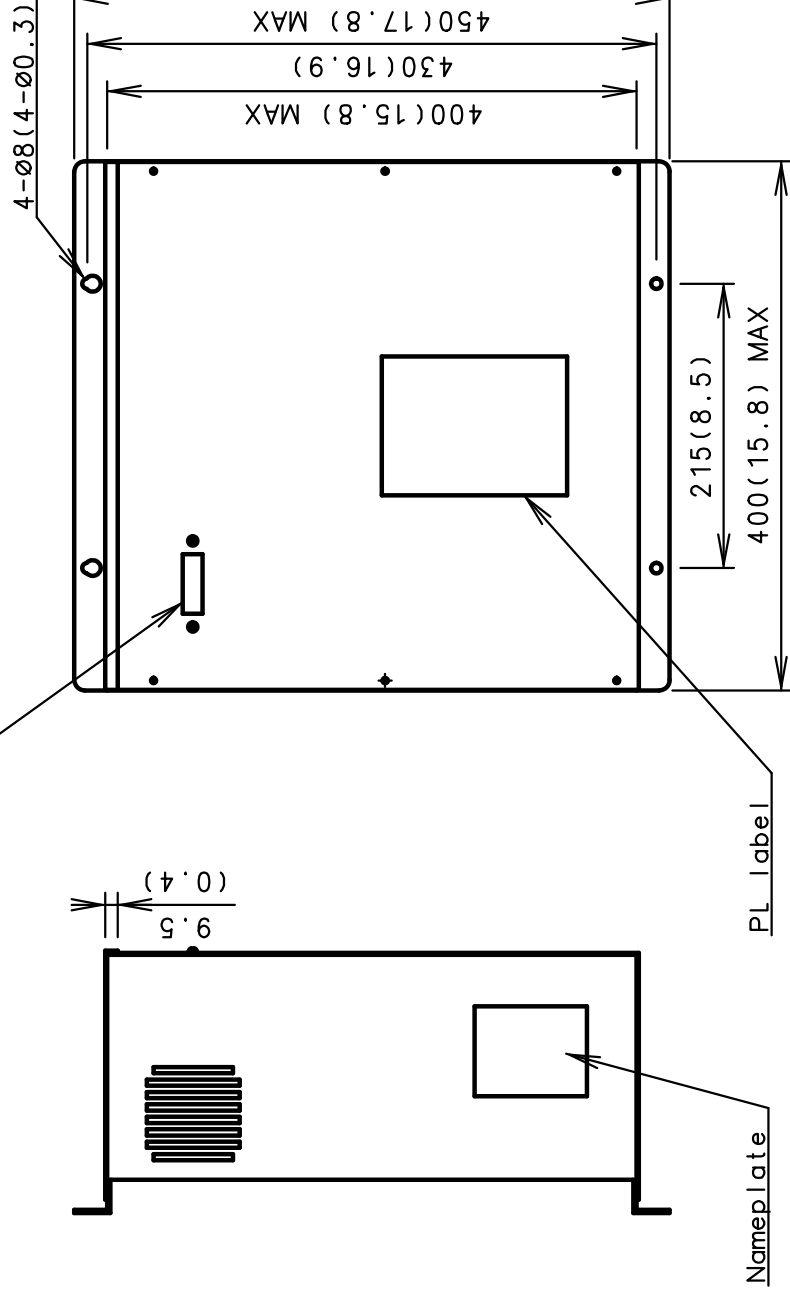


MAA-7500 Specifications

Name	MOTOR DRIVER
Model	MAA-7500A-A200
Dimensions	400mm(width)x200mm(depth)x450mm(height) 15.8inches(width)x7.9inches(depth)x17.8inches(height)
Weight	Apporox. 18kg/40lbs
Control method	Inverter control
Ambient temperature	-10 to 40°C
Humidity	5 to 95%(with no condensation)
Power supply	Single-phase 220-240V 50/60Hz Three-phase 200-240V 50/60Hz
Function (Other connecting terminal)	<ol style="list-style-type: none"> 1.Remote switch:connect to the Motor Driver to remote control the ARG operation (ON/OFF). 2.Start check lamp: connect to the Motor Drive to make sure the ARG is in operation or not. 3.Rotation rate check lamp: connect to the Motor Drive to make sure the ARG had reached the rated rotational speed(steady-state) or not.



Monitoring window



unit:mm(inch)

MAA-7500

名称 TITLE

MOTOR DRIVER
MAA-7500